

NU

NAGASAKI UNIVERSITY



国立大学法人

長崎大学
NAGASAKI UNIVERSITY

2025-2026



NAGASAKI
UNIVERSITY

NAGASAKI UNIVERSITY

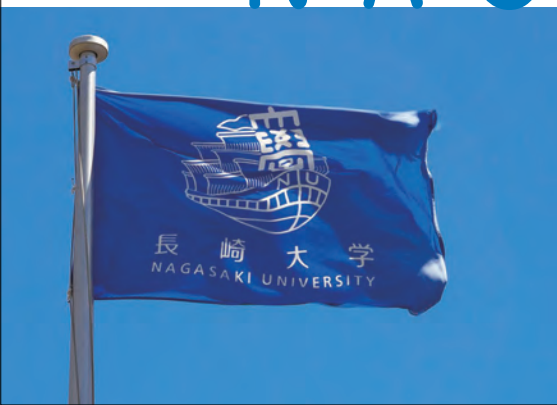
1-14 Bunkyo-machi, Nagasaki 852-8521 Japan
<https://www.nagasaki-u.ac.jp/en/>





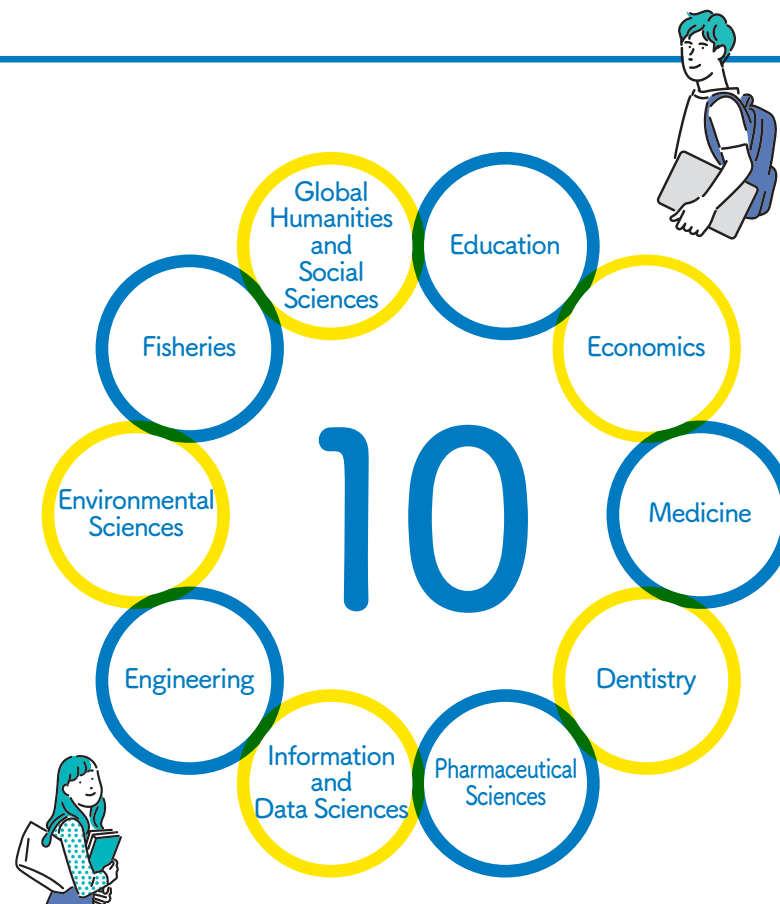
Nagasaki University contributes to the harmonious development of society by cultivating worldly individuals and conducting innovative science that facilitates peace throughout the world while preserving and showcasing its distinct traditional heritage

NAGASAKI UNIVERSITY





Undergraduate Schools and Faculties



Nagasaki University is a comprehensive university with 10 schools and faculties, including Humanities and Social Sciences, Integrated Science and Technology, and Biomedical Sciences. Faculty members with diverse expertise conduct both education and research. The university provides an environment that facilitates students' pursuits of their desired areas of study. Each faculty emphasizes immersive learning and is dedicated to cultivating leaders who can make societal contributions.



Scholarship

2024 Academic Year
Scholarship Amount



100,319,750yen

.....

Total
Scholarship Amount



382,627,556yen

Cumulative Total from FY2020-2024

The university offers scholarships to help students academically and in their daily lives. These scholarships do not have to be repaid and are used by many students each year to focus on their studies and research. In addition to scholarships, the university also provides discounts at the cafeteria and supports various clubs.



Graduate Schools



6 Graduate Schools

Global Humanities and Social Sciences

Economics

Education

Biomedical Sciences

Integrated Science and Technology

Tropical Medicine and Global Health



1 Program

Interfaculty Initiative in Planetary Health

Nagasaki University is a research university with 7 graduate schools that is promoting interdisciplinary education and research under the theme of "Fusion." In April 2024, the Graduate School of Integrated Science and Technology was established through the integration of the Graduate School of Engineering and the Graduate School of Fisheries and Environmental Sciences. The new school now offers Information Data courses as part of its expanded curriculum. Additionally, the university has launched the "Interfaculty Initiative in Planetary Health," a unique program in Japan. This initiative aims to foster leaders capable of leveraging the academic insights gleaned at the university to address global challenges by proposing policy changes, advancing research, and applying solutions in society.



International Cooperation

Inbound International Students

605 students

As of May 1, 2025



Partnerships with Foreign Institutions

54 Countries/Regions

As of May 1, 2025

(254 Partnerships)

Outbound Students

493 students

FY2024 (Apr.1-Mar.31)



Researcher Dispatched Abroad

814 times

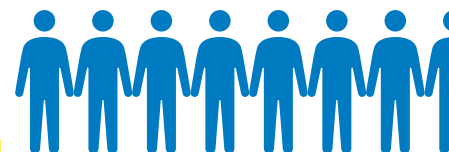
FY2023 (Apr.1-Mar.31)



Student Body

As of May 1, 2025

Undergraduate
7,517
students



Graduate
1,788
students



Total Number of Graduates : 102,707 students

Graduates in 2024 : 2,110 students

.....

Employment Rate
As of May 1, 2025

97.7%





Diversity

Percentage of Female Faculty

25.7 % **No.1 in Japan**

Out of 47 national comprehensive universities excluding women's universities

FY2024

Percentage of Newly-hired
Female Researchers



37.7 %

FY2024

Percentage of
Female Board Members



20.0 %

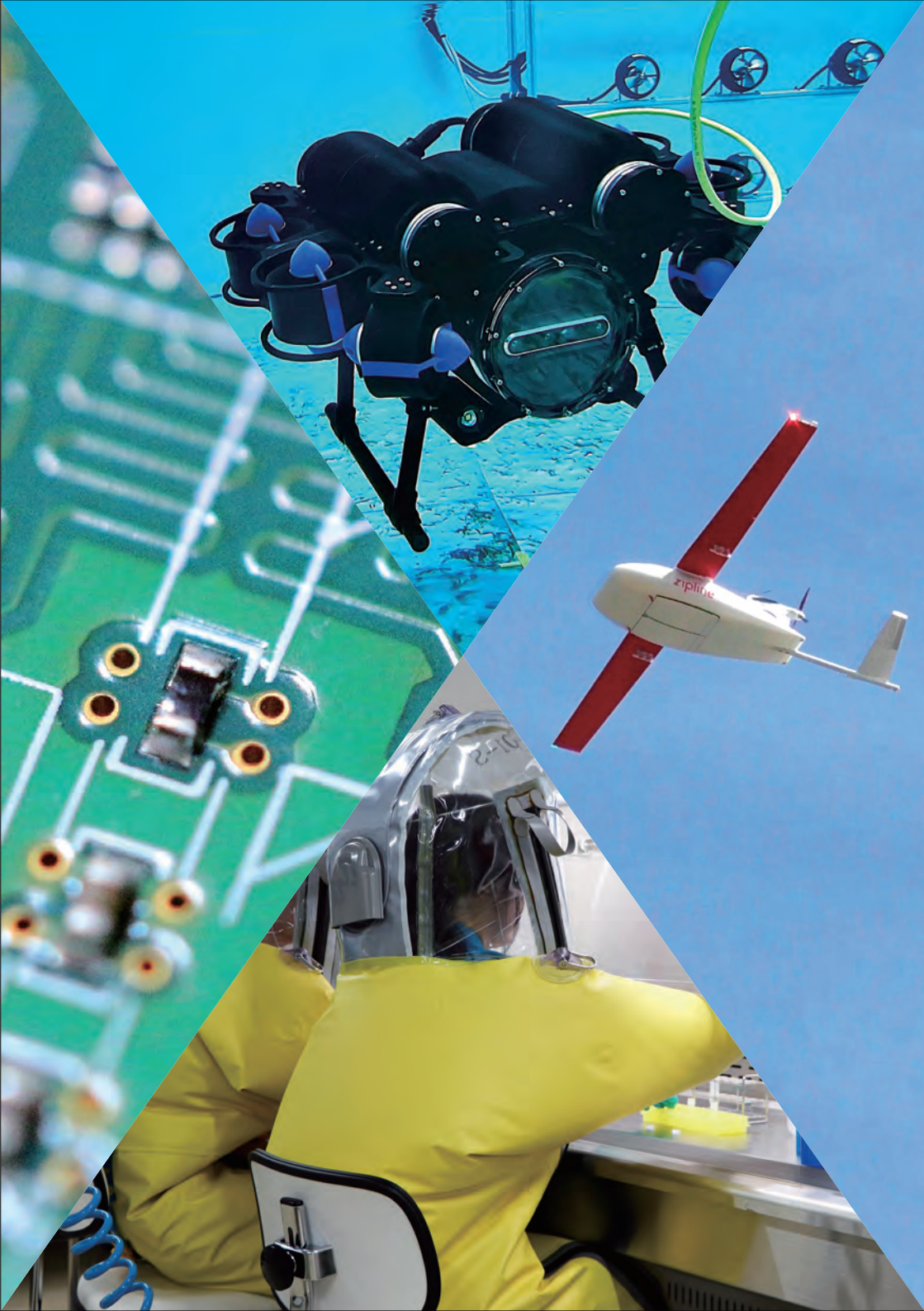
FY2024

Percentage of
Male Faculty & Staff Taking
Paternity Leave

44.0 %

FY2024

The Center for Diversity and Inclusion is dedicated to creating a university where all faculty, staff, and students can reach their full potential. The Center is focused on empowering female researchers, supporting work-life balance for faculty and staff, and promoting gender equality and diversity across the campus. Its efforts and accomplishments are gaining recognition within and outside the prefecture, establishing it as a top runner in promoting diversity at the university.



Industry-Academia Collaboration

FY 2024 (Apr.1-Mar.31)

Collaboration Agreements with Companies

The "Nagasaki Open Innovation Center" has been established to promote industrial revival and solve regional issues in Nagasaki Prefecture. The Center promotes joint research by matching the seeds of research and technology possessed by universities with the needs of companies and serves as a bridge to commercialization. The Center combines the university's academic expertise in 6 areas (AI, IoT, robotics, marine science, life science, aerospace, entrepreneurship/startups, and carbon neutrality) and fosters organic collaboration between industry, academia, and government that is unbound by conventional frameworks.

Joint Research

323 projects (682 million yen)



Commissioned
Research

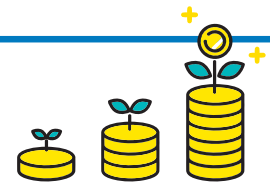
513 projects (4.5 billion yen)





University Funding

FY2025 Budget



72.193 billion yen

External Funding

FY 2024 (Apr.1–Mar.31)

Grant-in-Aid for
Scientific Research
(KAKENHI)

669
projects

1.166 billion yen

Endowment

6,602
projects

1.363 billion yen

Joint Research

323
projects

682 million yen

Commissioned
Research Funding

513
projects

4.5 billion yen