

NU

NAGASAKI UNIVERSITY



国立大学法人

長崎大学
NAGASAKI UNIVERSITY

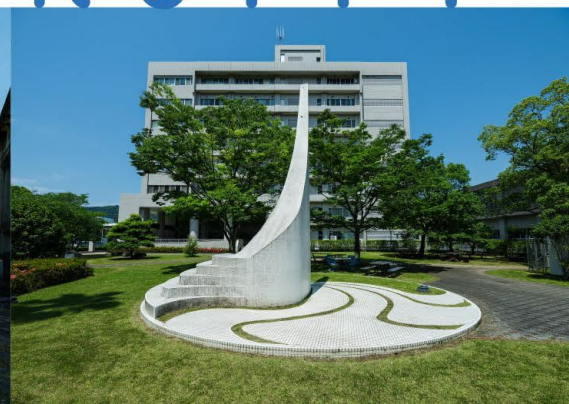
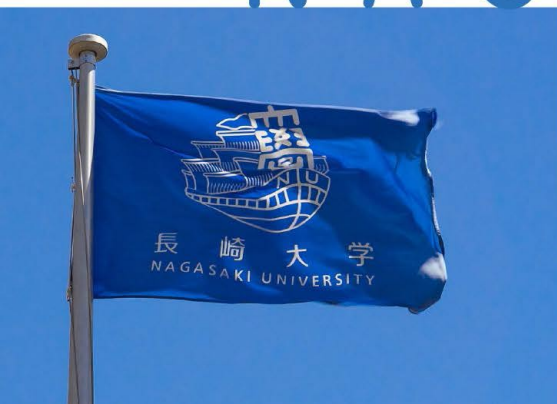
2024-2025





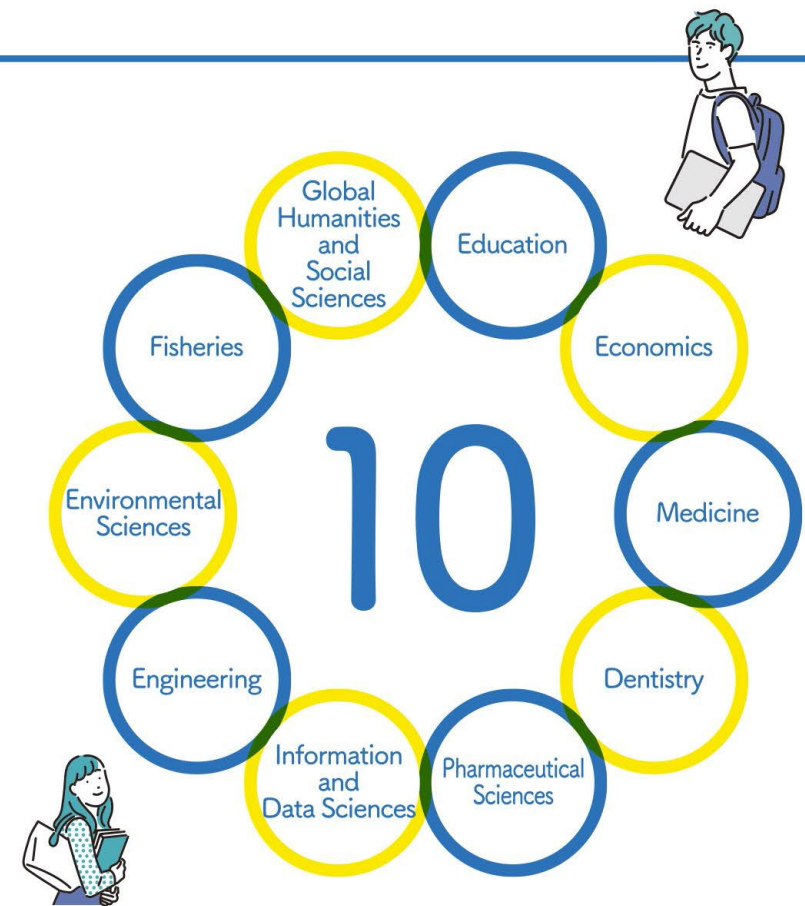
Nagasaki University contributes to the harmonious development of society by cultivating worldly individuals and conducting innovative science that facilitates peace throughout the world while preserving and showcasing its distinct traditional heritage

NAGASAKI UNIVERSITY





Undergraduate Schools and Faculties



Nagasaki University is a comprehensive university with 10 schools and faculties, including Humanities and Social Sciences, Integrated Science and Technology, and Biomedical Sciences. Faculty members with diverse expertise conduct both education and research. The university provides an environment that facilitates students' pursuits of their desired areas of study. Each faculty emphasizes immersive learning and is dedicated to cultivating leaders who can make societal contributions.



Graduate Schools



6 Graduate Schools

Global Humanities and Social Sciences

Economics

Education

Biomedical Sciences

Integrated Science and Technology

Tropical Medicine and Global Health



1 Program

Interfaculty Initiative in Planetary Health

Nagasaki University is a research university with 7 graduate schools that is promoting interdisciplinary education and research under the theme of "Fusion." In April 2024, the Graduate School of Integrated Science and Technology was established through the integration of the Graduate School of Engineering and the Graduate School of Fisheries and Environmental Sciences. The new school now offers Information Data courses as part of its expanded curriculum. Additionally, the university has launched the "Interfaculty Initiative in Planetary Health," a unique program in Japan. This initiative aims to foster leaders capable of leveraging the academic insights gleaned at the university to address global challenges by proposing policy changes, advancing research, and applying solutions in society.



Student Body

As of May 1, 2024

Undergraduate
7,474
students



Graduate
1,688
students



Total Number of Graduates : 98,424 students

Graduates in 2023 : 2,111 students

.....

Employment Rate
As of May 1, 2024
98%





Financial Aid

2023 Academic Year
Scholarship Amount



98,294,950yen

.....

Total
Scholarship Amount



282,307,806yen

Cumulative Total from FY2020-2022

The university offers scholarships to help students academically and in their daily lives. These scholarships do not have to be repaid and are used by many students each year to focus on their studies and research. In addition to scholarships, the university also provides discounts at the cafeteria and supports various clubs.



International Cooperation

International Students

593 students

As of May 1, 2024



Partnerships with Foreign Institutions

55 Countries/Regions

As of May 1, 2024

(249 Partnerships)

Inbound International Students

419 students

FY2023 (Apr.1-Mar.31)

Outbound Students

872 students

FY2023 (Apr.1-Mar.31)





Diversity

Percentage of Female Faculty

26.9% **No.1 in Japan**

Out of 47 national comprehensive universities excluding women's universities

Percentage of Newly-hired
Female Researchers

38%



Percentage of
Female Board Members

20%

Percentage of
Paternity Leave



39%

National Average 17%

The Center for Diversity and Inclusion is dedicated to creating a university where all faculty, staff, and students can reach their full potential. The Center is focused on empowering female researchers, supporting work-life balance for faculty and staff, and promoting gender equality and diversity across the campus. Its efforts and accomplishments are gaining recognition within and outside the prefecture, establishing it as a top runner in promoting diversity at the university.



Industry-Academia Collaboration

FY 2023 (Apr.1-Mar.31)

Collaboration Agreements with Companies

The "Nagasaki Open Innovation Center" has been established to promote industrial revival and solve regional issues in Nagasaki Prefecture. The Center promotes joint research by matching the seeds of research and technology possessed by universities with the needs of companies and serves as a bridge to commercialization. The Center combines the university's academic expertise in 6 areas (AI, IoT, robotics, marine science, life science, aerospace, entrepreneurship/startups, and carbon neutrality) and fosters organic collaboration between industry, academia, and government that is unbound by conventional frameworks.

Joint Research

335 projects (710 million yen)



Commissioned
Research

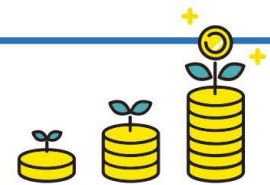
487 projects (5.1 billion yen)





University Funding

FY2023 Budget



66.668 billion yen

External Funding

FY 2023 (Apr.1-Mar.31)

Grant-in-Aid for
Scientific Research
(KAKENHI)

685
projects

1.129 billion yen

Endowment

6,379
projects

1.182 billion yen

Joint Research

335
projects

710 million yen

Commissioned
Research Funding

487
projects

5.1 billion yen



NAGASAKI UNIVERSITY

1-14 Bunkyo-machi, Nagasaki 852-8521 Japan
<https://www.nagasaki-u.ac.jp/en/>

